

# Mt. Gozaisho's SUMMIT PARK MAP



You can find the sign that marks the highest elevation point of Mt. Gozaisho, 1,212m (3,976ft)



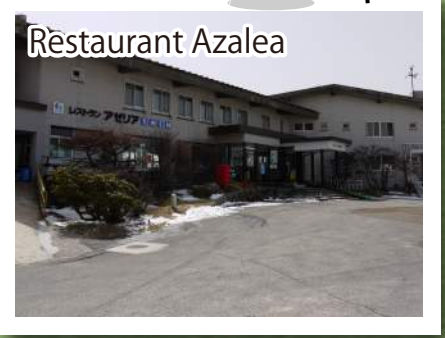
This is the nearest observatory from the Summit Park Station.



It was so named because you can see Mt. Fuji when the weather is good.



The shrine was dedicated to the deity of the Kiso-Ontake Shrine as Kakuju declared that "Mt. Gozaisho, the main peak of the Suzuka Mountain Range, is the most appropriate place to enshrine the deity."



Enjoy your meal with the magnificent mountain scenery.

**Distance and Required time from Summit Park Station**

	Distance	Required time	Distance	Required time
<b>C</b> Sightseeing Lift	50m	1minute	<b>7</b> Summit of Mt. Gozaisho	950m 20 ( 9 ) minute
<b>1</b> Chouyoudai Observatory	80m	2minute	<b>8</b> Boukodai Lookout	1,200m 24 (12) minute
<b>3</b> Fujimi-iwa Observatory	300m	6minute	<b>10</b> Ontake Daigongen Shrine	1,250m 25 (18) minute
<b>4</b> Restaurant Azalea	400m	8minute		

※Times in brackets indicate sightseeing lift times.

**Notes**

- Road
- Steps
- ☺ Restaurant
- ☺ Restroom
- ☺ Guide dogs allowed.
- ☺ Coin Locker
- 🏠 Observatory
- 🎿 Ski slope
- 🚰 Sightseeing Lift
- 👤 Trail
- 👤 Trail Entrance

Do not stray off mountain trails.